

ASHWOOD SPRING SEND



ROUND UP
ROUND UP
ROUND UP
ROUND UP
ROUND UP
ROUND UP



WICKERSLEY
PARTNERSHIP
TRUST.

HELLO!

I'm Mrs L Hartley, FS2 teacher and SENDCO.

What is a SENDCO?

I'm responsible for the operation of the Special Educational Needs Policy and coordination of specific provisions made to support individual children with SEND. The team will liaise with staff to monitor the pupils' progress, making sure that there are accurate records of your child's progress and needs, and together plan further interventions where necessary.

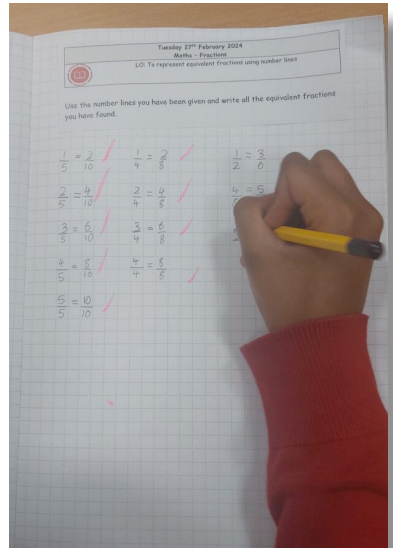
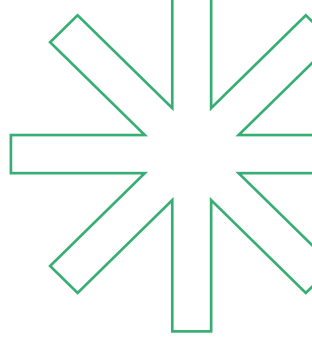
As SENDCO, it's my role to hold multi-agency meetings to support families and children making links and creating a team behind the child; liaising with all the other people who may be coming into school to help support your child's learning e.g. The Speech and Language Therapy Service, The Educational Psychologist. They will ensure that you are involved in supporting your child's learning, involved in reviewing how they are doing and is part of planning ahead for your child. If you have any questions or worries please don't hesitate to contact me.



MATHS

This term our maths curriculum, teaching and learning has been reviewed by our colleagues in the Trust.

A big well done to all the children for demonstrating the Ashwood Way, taking pride in their learning and displaying the resilience needed to exceed in Maths. Also a thank you to all the teaching staff and support staff who continue to adapt their teaching to ensure all our children succeed in their own Maths learning.



LIFE SKILLS



We would like to say a big thank you to Rawmarsh Community School who always provide a fantastic transition package for all our Ashwood children.

This year they have ensured extra visits have been offered to any of our children who needed a little extra. It was a lovely experience and great to see some familiar faces and ex students who couldn't wait to show us round.

We all felt much more confident about finding our way around the school and making new friends especially when so many of our old friends are already there to greet us!



SEND DROP-INS



The SEND Drop-Ins have continued to be a great success!

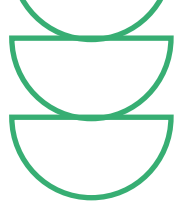
It's been a lovely opportunity for parents to informally get together, chat, share a cuppa and simply chat. Thank you to every person who comes along.

Everyone is welcome to attend, whether your child has a diagnosed need or not. Mrs Hartley, the SENDCO, is always present so if you ever have a quick question or want to book a more formal meeting whilst there.

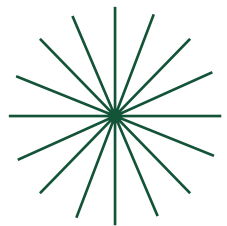
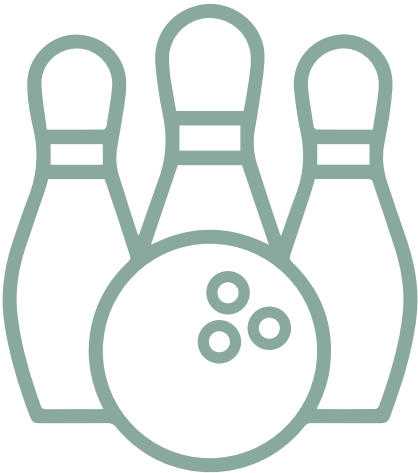
As the year goes on we hope to invite some special guests, so watch this space!



SPORT



A big well done to the Key Stage 2 children who represented Ashwood in the WPT bowling competition at Hollywood Bowl.



SEND REVIEWS

The second round of SEND reviews have been completed. During the summer term the class teachers have all asked to be part of the reviews. Therefore invites will be sent shortly for next term's reviews.

Please let a member of staff know if you are still waiting for your invite.



THE HUB

The Hub, has always been a space that has been a place that has been used for everything - interventions, meetings, calming time and everything else!

It was time for a glow up. The room has already been cleared and now has simple furniture, this term new sensory resources have arrived.

Next term we hope to have the room set up even further. It will continue to a place for everyone to use but also feel more safe, calming and inviting for all!





WHO'S WHO & WHAT'S WHAT!

Alex Gill - School Inclusion Team

The Specialist Inclusion Team (SI Team) are part of Rotherham's Inclusion Support Services and work within a range of educational settings in Rotherham, South Yorkshire and Derbyshire. Alex has already been in lots last half term especially focusing on our older children in school

Lisa Nelson - Educational Psychologist


Lisa works in partnership with children and young people between the ages of 0 – 25, their families, educational settings and services. Lisa will listen to children and young people and may use practical activities with them to find out how best to help improve their experience, wellbeing and outcomes.

Amy Ray - Speech and Language Therapist

Amy regularly comes into school and is currently screening all our Foundation Children to ensure appropriate speech and language support is implemented in school along with reviewing support for our key stage one children. Her colleagues often visit to offer support for our older children in school.

Chris Kiernan - SEMH outreach worker

The Aspire SEMH Outreach Team (AOT) provide bespoke consultation and support for students in Rotherham



schools with an identified SEMH needs, in line with the SEND code of practice. The aim is to build strategies in response to the student's need with an evidenced intervention plan and potential training to support the school.

With Me in Mind Rotherham With Me in Mind

This is one of the national Mental Health Support Teams (MHSTs) and there are teams based in both Doncaster and Rotherham. Our service was identified following the release of the Government Green Paper (2017), “Transforming Children and Young People’s Mental Health” in which there was a focus on earlier intervention and prevention, especially in, and linked to schools and colleges. One of the core proposals from the paper was to fund new Mental Health Support Teams, which are predominantly being supervised by NHS Children and Young People’s Mental Health Services as well as local charity/private services.

Rotherham SENDIASS

This stands for Special Educational Needs and Disability Information, Advice and Support Service. We can offer you impartial information, advice and support if you are:

- a parent or carer for a child or young person up to age 25 with special educational needs or disabilities
- a child up to age 16 who has special educational needs or disabilities
- a young person aged 16-25 who has special educational needs or disabilities

Parent Carers Forum

A registered charity run by and for families of children

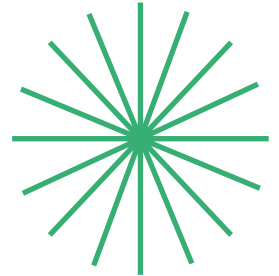


and young people (aged 0-25) with SEND. We work in partnership with service commissioners and providers, sharing knowledge and experience of families to help plan and develop the quality, range and accessibility of provision, creating better outcomes for families through participation and co-production.





SUMMER – UP NEXT



Make sure you're following our social media channels for all our updates.

Facebook - Rawmarsh Ashwood Primary School

X - @ashwoodprimary

Instagram - @ashwood_primary



WICKERSLEY
PARTNERSHIP
TRUST.

